

HYPERPRO

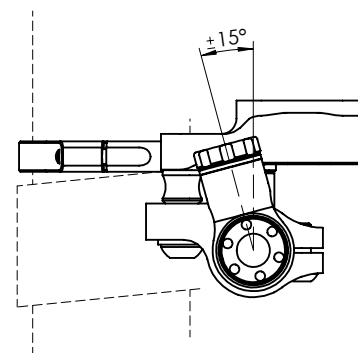
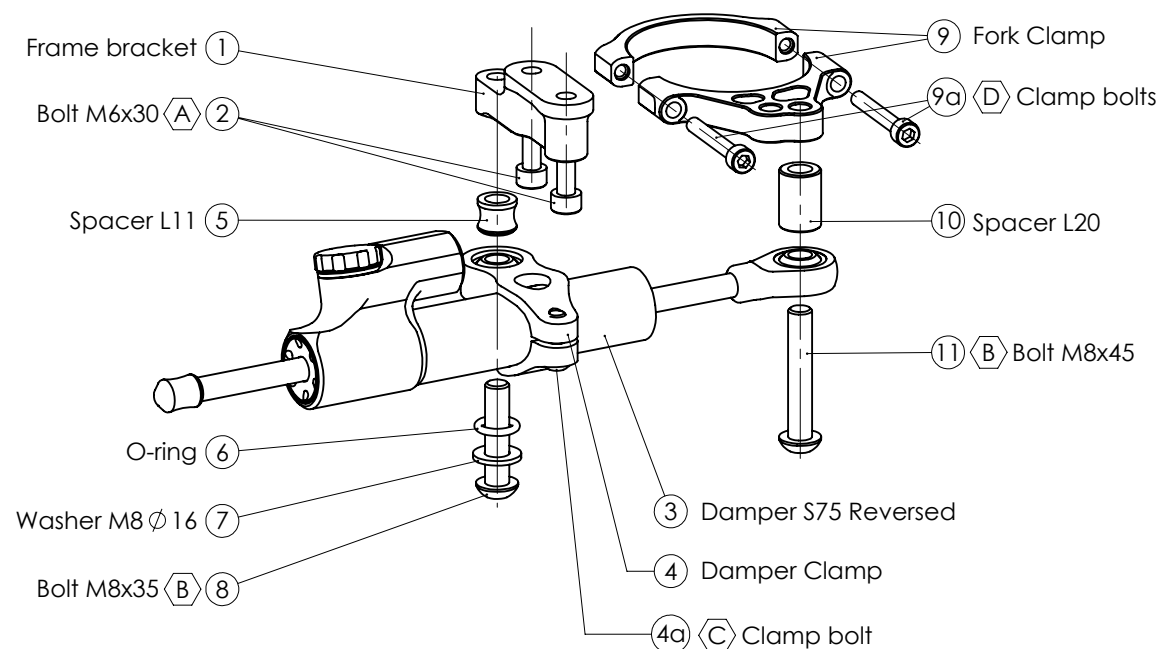
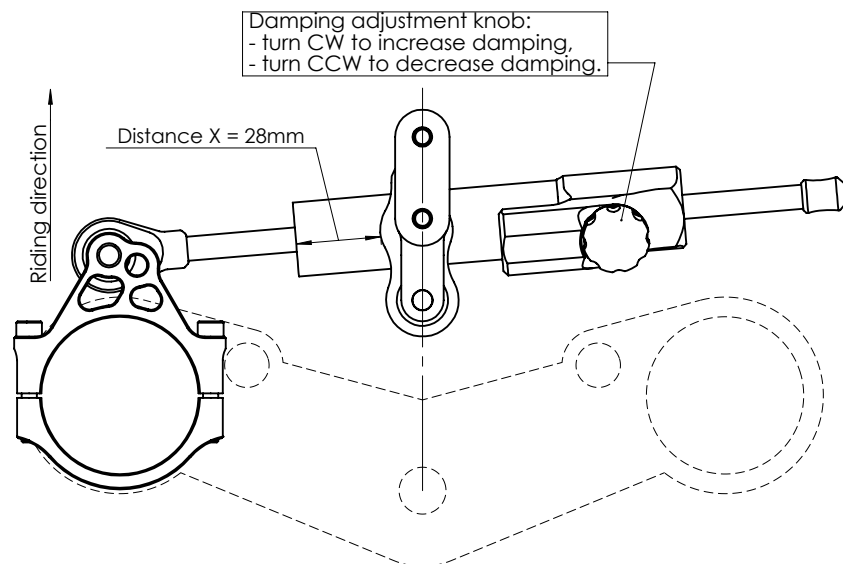
STEERING DAMPER MOUNTING KIT for

Triumph Street Triple S/ R/ RS (765) Model 2017->

MK-TR07-B001 PART LIST

SD stroke 75 REVERSED	1	Spacer L11 [MP-SP0001]	1
Damper Clamp [MP-DB018235]	1	Spacer L20 [MP-SP0002]	1
Fork Clamp [MP-SP0520]	1	Washer M8 Ø 16	1
Frame bracket [MP-FRMK37]	1	-	-
O-ring	1	-	-
M6x30	2	-	-
M8x35 Button head	1	-	-
M8x45 Button head	1	-	-

ALL IDEAS, DESIGNS ARRANGEMENTS AND PLANS INDICATED OR REPRESENTED BY THIS DRAWING ARE OWNED BY HYPERPRO AND WERE CREATED, EVOLVED AND DEVELOPED FOR USE ON AND IN CONNECTION WITH THE SPECIFIC PROJECT. NONE SUCH IDEAS, DESIGNS, ARRANGEMENTS OR PLANS SHALL BE USED BY OR DISCLOSED TO ANY PERSON, FIRM OR CORPORATION FOR ANY PURPOSE WHATSOEVER WITHOUT THE WRITTEN PERMISSION OF HYPERPRO.



* TORQUES

A: 5-9Nm / 44-80Lbs.In / 4.0-6.4Lbs.Ft
B: 14-17Nm / 124-150Lbs.In / 10.3-12.5Lbs.Ft
C: 6Nm / 53Lbs.In / 4.4Lbs.Ft

D: 8Nm / 70Lbs.In / 5.9Lbs.Ft
E: 55Nm / 486Lbs.In / 40Lbs.Ft
F: Factory torque (see owners manual)

HYPERPRO

STEERING DAMPER MOUNTING KIT

for

Triumph Street Triple S/ R/ RS (765) Model 2017->

MK-TR07-B001 INSTALLATION INSTRUCTIONS

In general:

HYPERPRO can not be held responsible in any way for any form of physical, material, financial or other damage arising from use, assembly or overhaul of HYPERPRO products. HYPERPRO reserves the right to make changes without prior notice.

This product is ONLY TO BE INSTALLED BY A PROFESSIONAL MECHANIC.

This product is only to be used for the motorcycle brand, model and year stated specifically on top of the pages of this manual.

DO NOT attempt to install this product on motorcycles from any different brand, model and/or year than stated on the pages of this manual.

DO NOT use this kit for cars, boats, jet skis, snowmobiles, ATV's, aircraft, hovercrafts or any other vehicle and/or purpose.

HYPERPRO steering dampers are FOR RACE USE ONLY, NOT FOR HIGHWAY USE!

Before installation:

- Please read the entire manual carefully before starting the installation!
- Check if you have all the tools required. Good tools are a must.
- Protect your bike at the most important places in and around the work area (e.g. tank, fairing, frame, etc.), with a blanket, towel or similar.

During installation:

- Check all operations and parts carefully before, during and after performing each step.
- Clean all surfaces that are required for fitting parts together or for applying self adhesives or loctite, thoroughly with contact cleaner or another degreaser, unless otherwise stated.
- Be careful not to damage or scratch any part of your bike.
- ALWAYS work relaxed and concentrated!! It is very easy to damage something or make a mistake.

After installation:

- Check and make sure that there is no contact between any part of the steering damper kit and any part of the motorcycle. The kit should not hit anything. Steering movement should not be limited by the steering damper. If the steering movement is limited, adjust the position of the tube in the clamp until steering movement is normal again. Do not forget to tighten the clamp bolt again!
- ALWAYS check the steering movement and feeling before each ride!
- FIRST RIDES: Start with the damper turned fully open (turn adjuster knob fully counter clockwise). Start adjusting in between rides with steps of MAX. 2 CLICKS (0.25 TURN) EACH TIME, until the damper is working satisfactory for your riding style.
- NEVER USE MAXIMUM SETTING, ALWAYS OPEN AT LEAST 2 CLICKS (0.25 TURN).
- WARNING ! DAMPER HAS AN ACTIVE / SPEEDSENSITIVE DAMPING SYSTEM;
 - Steering with NORMAL MOVEMENT should be FREE !!
 - Steering with FAST MOVEMENT should be CONTROLLED BY DAMPER !!
- HYPERPRO uses a special seal to reduce friction. The seal uses an oil film to work properly. It is normal that some oil can appear on the pistonrod.
- Damper works with oil: DAMPING CAN BE HARDER AT LOWER TEMPERATURES!

Step 1: install the frame bracket

Install the frame bracket using:

- Frame bracket (1)
- 2x Bolt M6x30 (2)

Remove the 2 standard M6 bolts from the head light height adjuster, underneath the cockpit frame. Install the frame bracket (1), using the 2 supplied M6x30 bolts (2). Tighten the bolts to a torque of approx. 5-9Nm/44-80Lbs.In/4.0-6.4Lbs.Ft

Step 2: install the damper clamp

Install the damper clamp using:

- Damper Clamp (4)
- Spacer L11 (5)
- O-Ring (6)
- Washer M8 \varnothing 16 (7)
- Bolt M8x35 Button head (8)

Put the assembly together as shown on page 1: install the damper clamp (4), with the spacer (5), O-ring (6) and washer (7) to the frame bracket using the M8x35 bolt (8). Tighten the bolt to a torque of approx. 14-17Nm/124-150Lbs.In/10.3-12.5Lbs.Ft.

Step 3: install the fork clamp

install the fork clamp using:

- Fork clamp \varnothing 52 (9)

Assemble the fork clamp around the left fork leg, directly on top of the lower triple clamp. Make sure the holes are positioned as shown. Set the angle of the fork clamp as shown and tighten the clamp bolts evenly to a torque of approx. 8Nm/70Lbs.In/5.9Lbs.Ft.

Step 4: install the steering damper

Install the steering damper using:

- Steering damper, stroke 75 REVERSED (3)
- Spacer L20 (10)
- Bolt M8x45 button head (11)

Shove the damper (3) through the clamp until the ball-joint can be fitted to the fork clamp. Use the spacer (10) and M8 bolt (11) to mount the ball-joint to the fork clamp and tighten to a torque of approx. 14-17Nm/124-150Lbs.In/10.3-12.5Lbs.Ft.

Position the damper tube until the distance "X" stated on page 1 is reached, set the angle of the damper body at approx. 15° (see picture) then tighten the clamp bolt (4a) to a torque of approx. 6Nm/53Lbs.In/4.4Lbs.Ft. Check if the damper is level horizontally and aligned to the bike. Check if the damper does not touch anything (e.g. head lights, triple clamp) when steering from left to right. Check if the bike can make it's full steering angle from left to right.