

HYPERPRO

STEERING DAMPER MOUNTING KIT

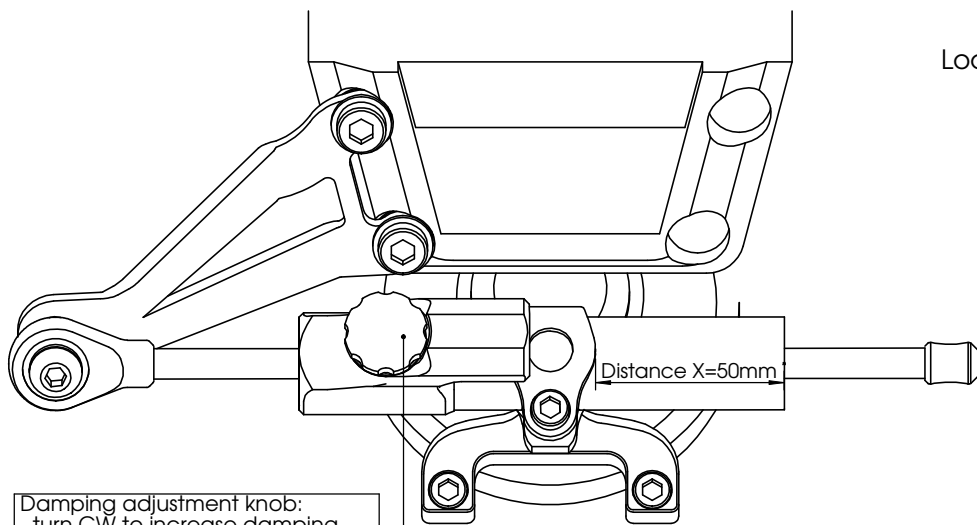
for

**Kawasaki ER-6n
Model 2012->**

MK-KA06-T008 PART LIST

SD stroke 75	1	M8x40 Button head	1
Damper Clamp (MP-DB0003)	1	Washer M6 ϕ 12	1
O-Ring	2	Washer M8 ϕ 16	3
Fork Bracket (MP-FOMK87)	1	Lock nut M8	1
Tank Bracket (MP-TAMK77)	1	Spacer A (MP-SP081611)	2
M6x20	2	Spacer B (MP-SP061427)	1
M6x50 Low head 8.8	1	Spacer C (MP-SP0008)	1
M8x45 Low head 8.8	2	-	-

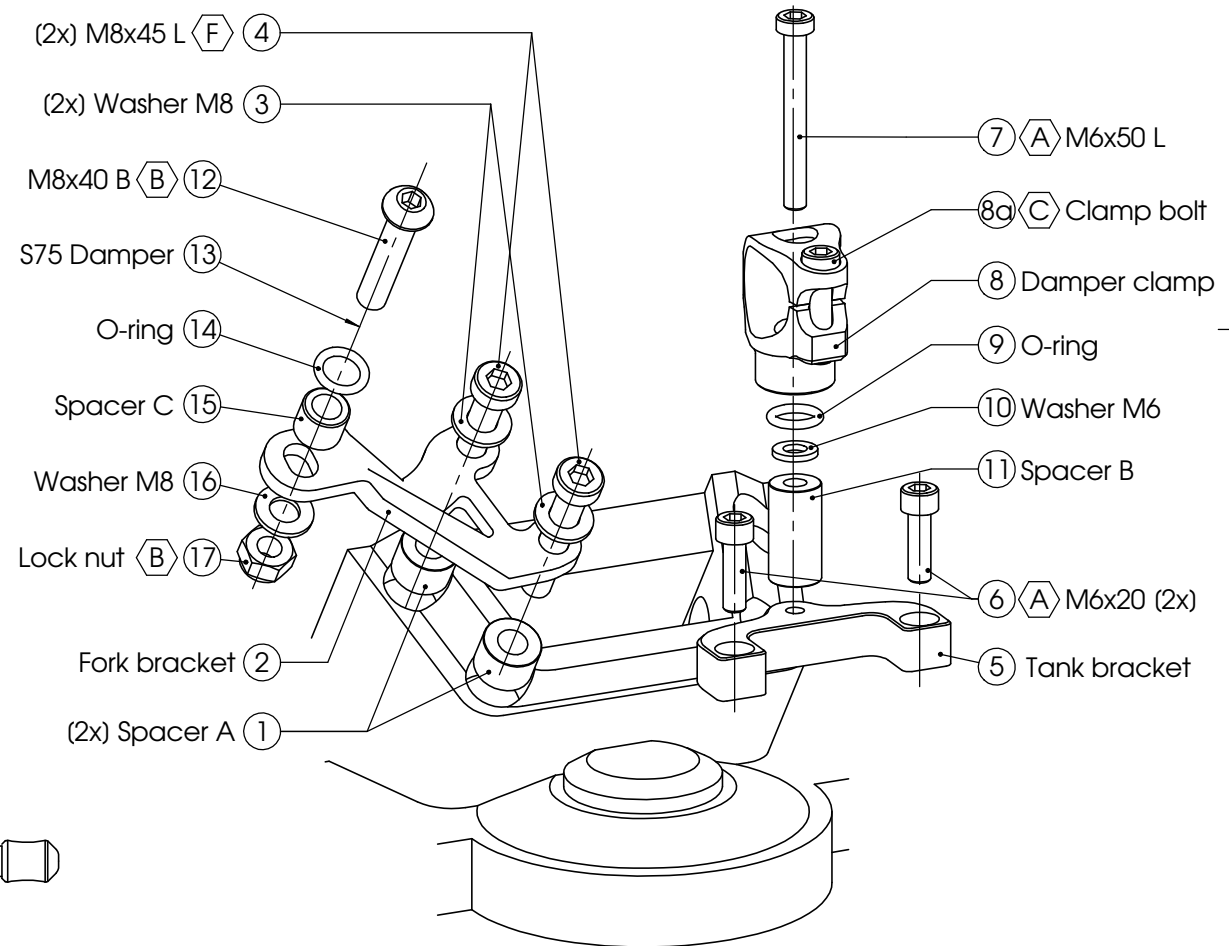
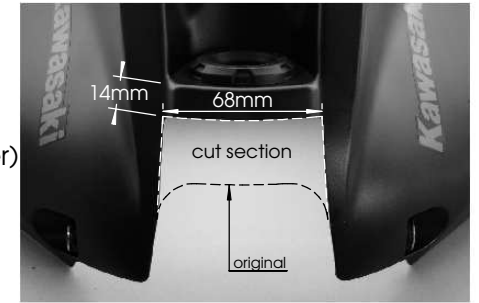
ALL IDEAS, DESIGNS ARRANGEMENTS AND PLANS INDICATED OR REPRESENTED BY THIS DRAWING ARE OWNED BY HYPERPRO AND WERE CREATED, EVOLVED AND DEVELOPED FOR USE ON AND IN CONNECTION WITH THE SPECIFIC PROJECT. NONE SUCH IDEAS, DESIGNS, ARRANGEMENTS OR PLANS SHALL BE USED BY OR DISCLOSED TO ANY PERSON, FIRM OR CORPORATION FOR ANY PURPOSE WHATSOEVER WITHOUT THE WRITTEN PERMISSION OF HYPERPRO.



Damping adjustment knob:
- turn CW to increase damping.
- turn CCW to decrease damping.

It is required to modify the tank cover to complete the installation:

- install the complete mounting kit, **without the cover**
- check fitment and operation.
If OK, continue the installation
(in case of a problem: please contact your supplier)
- remove the steering damper and damper clamp
- modify the tank cover according to the picture ->
- install the cover over the tank bracket
- repeat steps 3 and 4 to complete the installation



* TORQUES

A: 5-9Nm / 44-80Lbs.In / 4.0-6.4Lbs.Ft
B: 14-17Nm / 124-150Lbs.In / 10.3-12.5Lbs.Ft
C: 6Nm / 53Lbs.In / 4.4Lbs.Ft

D: 8Nm / 70Lbs.In / 5.9Lbs.Ft
E: 55Nm / 486Lbs.In / 40Lbs.Ft
F: Factory torque (see owners manual)

HYPERPRO

STEERING DAMPER MOUNTING KIT

for

Kawasaki ER-6n Model 2012->

MK-KA06-T008 INSTALLATION INSTRUCTIONS

In general:

HYPERPRO can not be held responsible in any way for any form of physical, material, financial or other damage arising from use, assembly or overhaul of HYPERPRO products. HYPERPRO reserves the right to make changes without prior notice.

This product is ONLY TO BE INSTALLED BY A PROFESSIONAL MECHANIC.

This product is only to be used for the motorcycle brand, model and year stated specifically on top of the pages of this manual.

DO NOT attempt to install this product on motorcycles from any different brand, model and/or year than stated on the pages of this manual.

DO NOT use this kit for cars, boats, jet skis, snowmobiles, ATV's, aircraft, hovercrafts or any other vehicle and/or purpose.

HYPERPRO steering dampers are FOR RACE USE ONLY, NOT FOR HIGHWAY USE!

Before installation:

- Please read the entire manual carefully before starting the installation!
- Check if you have all the tools required. Good tools are a must.
- Protect your bike at the most important places in and around the work area (e.g. tank, fairing, frame, etc.), with a blanket, towel or similar.

During installation:

- Check all operations and parts carefully before, during and after performing each step.
- Clean all surfaces that are required for fitting parts together or for applying self adhesives or loctite, thoroughly with contact cleaner or another degreaser, unless otherwise stated.
- Be careful not to damage or scratch any part of your bike.
- ALWAYS work relaxed and concentrated!! It is very easy to damage something or make a mistake.

After installation:

- Check and make sure that there is no contact between any part of the steering damper kit and any part of the motorcycle. The kit should not hit anything. Steering movement should not be limited by the steering damper. If the steering movement is limited, adjust the position of the tube in the clamp until steering movement is normal again. Do not forget to tighten the clamp bolt again!
- ALWAYS check the steering movement and feeling before each ride !
- FIRST RIDES: Start with the damper turned fully open (turn adjuster knob fully counter clockwise). Start adjusting in between rides with steps of MAX. 2 CLICKS (0.25 TURN) EACH TIME, until the damper is working satisfactory for your riding style.
- NEVER USE MAXIMUM SETTING, ALWAYS OPEN AT LEAST 2 CLICKS (0.25 TURN).

- WARNING ! DAMPER HAS AN ACTIVE / SPEEDSENSITIVE DAMPING SYSTEM;
 - Steering with NORMAL MOVEMENT should be FREE !!
 - Steering with FAST MOVEMENT should be CONTROLLED BY DAMPER !!
- HYPERPRO uses a special seal to reduce friction. The seal uses an oil film to work properly. It is normal that some oil can appear on the pistonrod.
- Damper works with oil: DAMPING CAN BE HARDER AT LOWER TEMPERATURES!

Step 1: install the fork bracket

Install the tank bracket using:

- 2x Spacer A (1)
- Fork bracket (2)
- 2x Washer M8 \varnothing 16 (3)
- 2x Bolt M8x45 L (4)

Remove the flyscreen. Disconnect and remove the cockpit unit. Remove the left handle bar clamp bolts (10mm socket).

Install the fork bracket (2) using the spacers (1), M8 washers (3) and M8x45 bolts (4). Tighten the front bolt first, then the rear bolt according to the service manual (\pm 25Nm).

Reinstall the cockpit unit and the flyscreen.

Step 2: install the tank bracket

Install the tank bracket using:

- Tank bracket (5)
- 2x Bolt M6x20 (6)

Remove the front tank cover.

Remove the 2 bolts from the front of the ignition lock. Install the tank bracket (5) using the M6x20 bolts (6). Tighten the bolts to a torque of approx. 5-9Nm/44-80Lbs.In/4.0-6.4Lbs.Ft.

Step 3: install the damper clamp

Install the damper clamp using:

- M6x50 L (7)
- Damper Clamp (8)
- O-ring (9)
- Washer M6 (10)
- Spacer B (11)

Install the parts to the tank bracket (5) in the correct order as shown on page 1. Tighten the bolt (7) to a torque of approx. 5-9Nm/44-80Lbs.In/4.0-6.4Lbs.Ft.

Step 4: install the steering damper

Install the steering damper using:

- Bolt M8x40 button head (12)
- Steering damper, stroke 75 (13)
- 1x O-ring (14)
- Spacer C (15)
- Washer M8 \varnothing 16 (16)
- Lock nut M8 (17)

Ensure that the clamp bolt of the damper clamp is pointing to the rear. Shove the damper (13), with the knob-end first, through the damper clamp until the ball joint can be fitted to the fork bracket. Use the bolt (12), O-ring (14) Spacer (15), Washer (16) and nut (17) to mount the damper ball joint to the fork bracket and tighten the bolt and nut with a torque of 14-17Nm/124-150Lbs.In/10.3-12.5Lbs.Ft. Position the damper tube until the distance "X" is reached, then tighten the clamp bolt (8a) with a torque of 6Nm/53Lbs.In/4.4Lbs.Ft. Check if the damper is level horizontally and aligned to the bike. Check if the damper does not touch anything (e.g. tank) when steering from left to right. Check if the bike can make it's full steering angle from left to right. IF OK, go to step 5.

Step 5: modify and install the tank cover

It is necessary to modify (cut) the tank cover, before it can be reinstalled. Undo step 3 and 4. Modify the tank cover according to the picture on page 1, until it fits over the tank bracket (5). Repeat steps 3 and 4 to complete the installation.