

# HYPERPRO

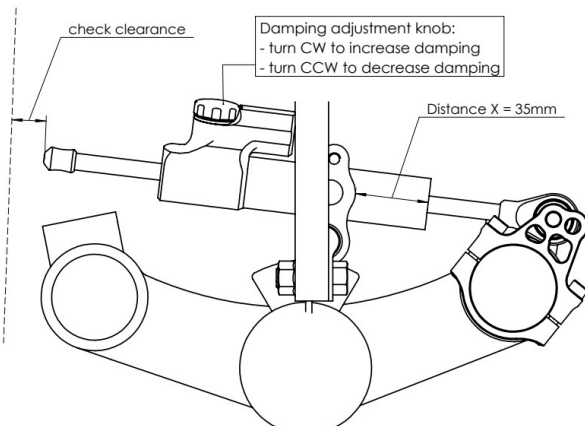
## STEERING DAMPER MOUNTING KIT for

### Kawasaki Ninja 400 RACE Model 2018->

#### MK-KA04-B002 PART LIST

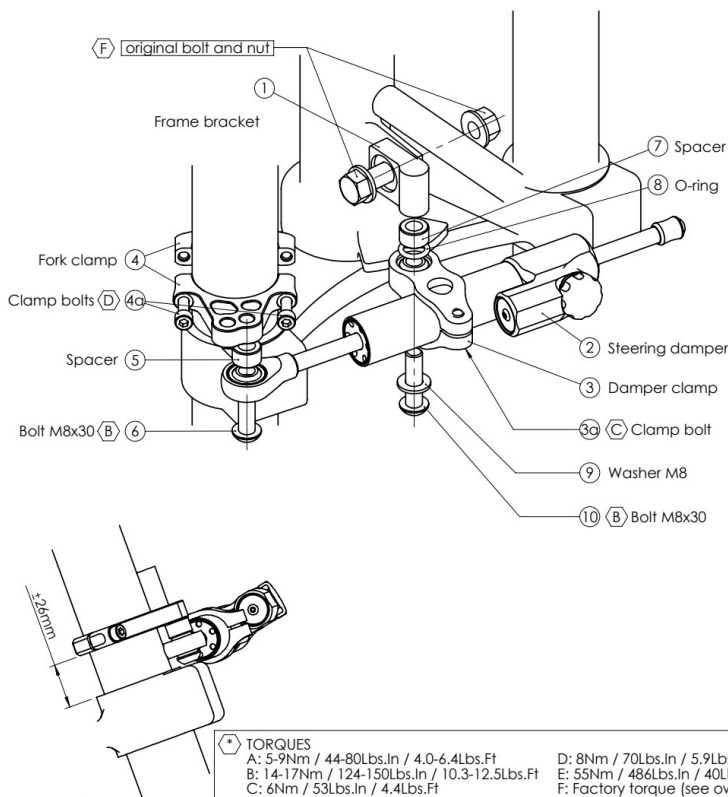
SD stroke 75 REVERSED	1	-	-
Damper Clamp [MP-DB018235]	1	-	-
Fork Clamp [MP-FC0410]	1	-	-
Frame Bracket [MP-FRMK41]	1	-	-
Spacer [MP-SP0008]	2	-	-
M8x30 Button head	2	-	-
Washer M8 Ø 16	1	-	-
O-ring	1	-	-

ALL IDEAS, DESIGNS, ARRANGEMENTS AND PLANS INDICATED OR REPRESENTED BY THIS DRAWING ARE OWNED BY HYPERPRO AND WERE CREATED, EVOLVED AND DEVELOPED FOR USE ON AND IN CONNECTION WITH THE SPECIFIC PROJECT. NONE SUCH IDEAS, DESIGNS, ARRANGEMENTS OR PLANS SHALL BE USED BY OR DISCLOSED TO ANY PERSON, FIRM OR CORPORATION FOR ANY PURPOSE WHATSOEVER WITHOUT THE WRITTEN PERMISSION OF HYPERPRO.



#### ATTENTION: RACE-KIT!

- Remove horn and bracket
- Re-route brake hose and cables
- may interfere with stock parts, race use only!



# HYPERPRO

## STEERING DAMPER MOUNTING KIT for

### Kawasaki Ninja 400 RACE Model 2018->

#### MK-KA04-B002 INSTALLATION INSTRUCTIONS

##### In general:

HYPERPRO can not be held responsible in any way for any form of physical, material, financial or other damage arising from use, assembly or overhaul of HYPERPRO products. HYPERPRO reserves the right to make changes without prior notice.

This product is ONLY TO BE INSTALLED BY A PROFESSIONAL MECHANIC. This product is only to be used for the motorcycle brand, model and year stated specifically on top of the pages of this manual.

DO NOT attempt to install this product on motorcycles from any different brand, model and/or year than stated on the pages of this manual.

DO NOT use this kit for cars, boats, jet skis, snowmobiles, ATV's, aircraft, hovercrafts or any other vehicle and/or purpose.

HYPERPRO steering dampers are FOR RACE USE ONLY, NOT FOR HIGHWAY USE!

##### Before installation:

- Please read the entire manual carefully before starting the installation!
- Check if you have all the tools required. Good tools are a must.
- Protect your bike at the most important places in and around the work area (e.g. tank, fairing, frame, etc.), with a blanket, towel or similar.

##### During installation:

- Check all operations and parts carefully before, during and after performing each step.
- Clean all surfaces that are required for fitting parts together or for applying self adhesives or loctite, thoroughly with contact cleaner or another degreaser, unless otherwise stated.
- Be careful not to damage or scratch any part of your bike.
- ALWAYS work relaxed and concentrated!! It is very easy to damage something or make a mistake.

##### After installation:

- Check and make sure that there is no contact between any part of the steering damper kit and any part of the motorcycle. The kit should not hit anything. Steering movement should not be limited by the steering damper. If the steering movement is limited, adjust the position of the tube in the clamp until steering movement is normal again. Do not forget to tighten the clamp bolt again!
- ALWAYS check the steering movement and feeling before each ride!
- FIRST RIDES: Start with the damper turned fully open (turn adjuster knob fully counter clockwise). Start adjusting in between rides with steps of MAX. 2 CLICKS (0.25 TURN) EACH TIME, until the damper is working satisfactory for your riding style.
- NEVER USE MAXIMUM SETTING, ALWAYS OPEN AT LEAST 2 CLICKS (0.25 TURN).
- WARNING ! DAMPER HAS AN ACTIVE / SPEEDSENSITIVE DAMPING SYSTEM;
  - Steering with NORMAL MOVEMENT should be FREE !!
  - Steering with FAST MOVEMENT should be CONTROLLED BY DAMPER !!
- HYPERPRO uses a special seal to reduce friction. The seal uses an oil film to work properly. It is normal that some oil can appear on the pistonrod.
- Damper works with oil: DAMPING CAN BE HARDER AT LOWER TEMPERATURES!

#### Step 1: remove the horn and bracket

This is a race kit, it may interfere with original parts, cables and/or hoses without modification. Remove the horn and horn bracket from the lower triple clamp. Check the routing of the cables and hoses, make sure they can never interfere with the steering damper at any steering angle!

#### Step 2: install the frame bracket

Install the tank bracket using:

- Frame bracket (1)

Remove the original fairing frame bolt and nut from the front of the steering head. Install the frame bracket to the right side of the fairing mount and make sure the positioning edge fits properly. Tighten the bolt and nut to the factory recommended torque (see service manual).

Remove the 2 standard M6x30 bolts and washers from the front tank mounting points. Install the tank bracket (1), using the 2 supplied M6x35 bolts (2), place only the supplied M6 washers (3) underneath the bracket for support as shown in the right picture on page 1. Tighten the bolts with a torque of approx. 5-9Nm/44-80Lbs.In/4.0-6.4Lbs.Ft

#### Step 3: pre-assemble the damper and clamps

Pre-assemble the damper using:

- Steering damper (2)
- Damper clamp (3)
- Fork clamp (4)

Shove the damper (2), with the ball-joint first, through the damper clamp (3) until distance "X" stated on page 1 is reached. Make sure damper and clamp are positioned correctly and tighten the clamp bolt (3a) to a torque of approx. 6Nm/53Lbs.In/4.4Lbs.Ft.

Disassemble the fork clamp (4). Use spacer (5) and M8 bolt (6) to mount the damper to the hole nearest to the fork tube. Make sure the clamp is positioned correctly and tighten the bolt to a torque of approx. 14-17Nm/124-150Lbs.In/10.3-12.5Lbs.Ft.

#### Step 4: install the steering damper

Install the fork bracket pre-assembly using:

- Steering damper and clamp pre-assembly

Mount the damper clamp (3) to the frame bracket (1) using the the spacer (7), O-ring (8), washer (9) and M8 bolt (10). Tighten the bolt (10) to a torque of approx. 14-17Nm/124-150Lbs.In/10.3-12.5Lbs.Ft.

Assemble the fork clamp (4) around the right fork leg, just above the lower triple clamp. Set the height and angle as shown on page 1 and tighten the clamp bolts to a torque of approx. 8Nm/70Lbs.In/5.9Lbs.Ft.

Check if the damper is level horizontally and free of tension through the whole stroke. Check if the damper does not touch anything (e.g. fairing frame, coolant reservoir) when steering from left to right. Check if the bike can make it's full steering angle from left to right.

Adjust the position and angle of the damper body and/or clamps if necessary to improve clearance. Do not forget to re-tighten the clamp bolts!