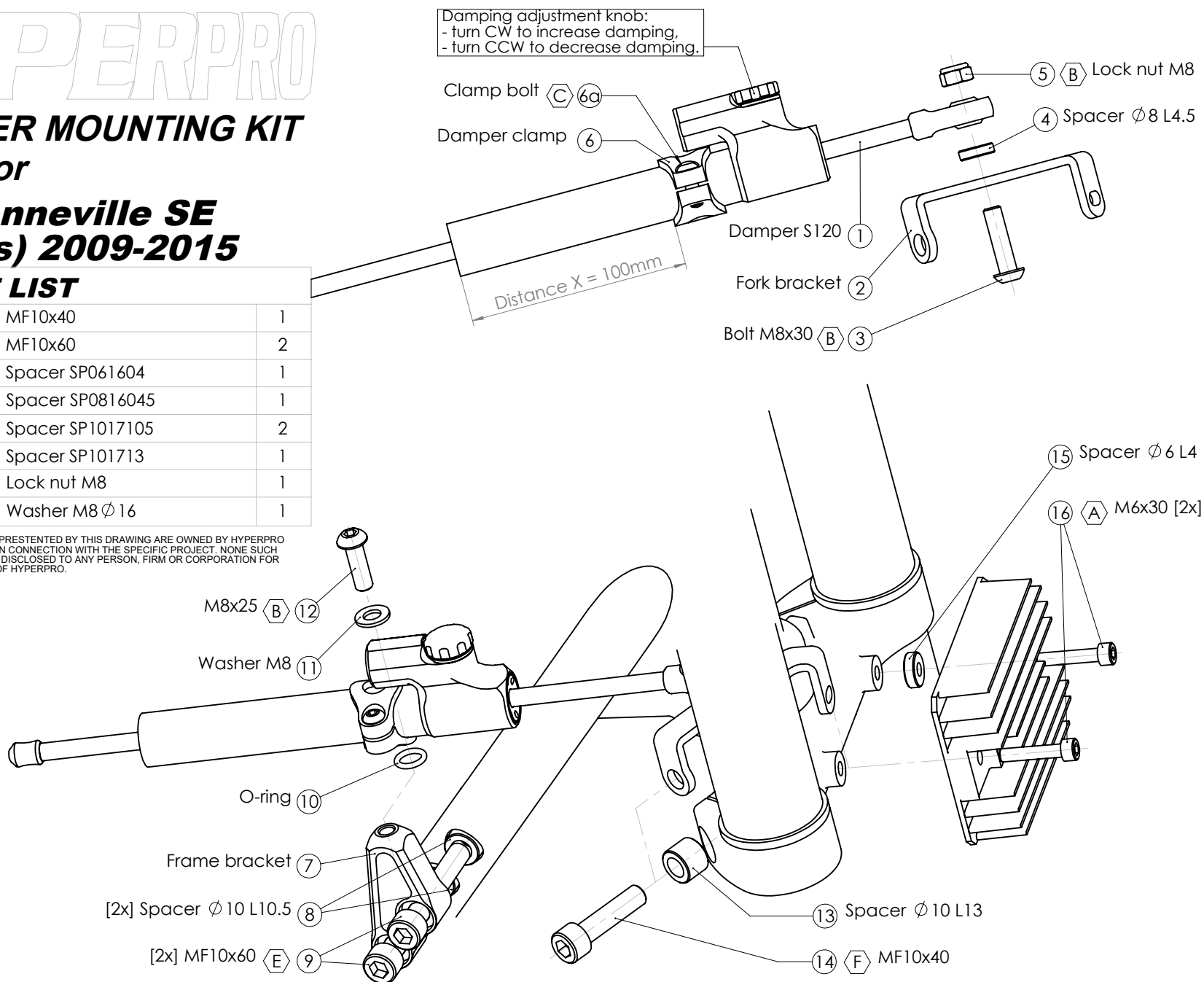


for

MK-TR08-S001 PART LIST

SD stroke 120	1	MF10x40	1
Damper Clamp MP-DB018235	1	MF10x60	2
O-Ring 10.3x2.4	1	Spacer SP061604	1
Fork Bracket MP-FOMK97	1	Spacer SP0816045	1
Frame Bracket MP-FRMK33	1	Spacer SP1017105	2
M6x30	2	Spacer SP101713	1
M8x25 Button head	1	Lock nut M8	1
M8x30 Button head	1	Washer M8 \varnothing 16	1

This technical drawing shows a mechanical assembly, possibly a valve or actuator. It features a vertical shaft with a handle at the bottom and a horizontal arm extending from the side. The handle has a circular base with a central hole and a smaller hole on the side. The horizontal arm has a cylindrical body with a central hole and a smaller hole on the side. The assembly is mounted on a base with a central hole and a smaller hole on the side. The drawing is a line drawing with no shading.



D: 8Nm / 70Lbs.In / 5.9Lbs.Ft
E: 22Nm / 195Lbs.In / 16Lbs.Ft
F: 27Nm / 239Lbs.In / 20Lbs.Ft

HYPERPRO

STEERING DAMPER MOUNTING KIT

for

Triumph Bonneville SE (cast wheels) 2009-2015

MK-TR08-S001 INSTALLATION INSTRUCTIONS

In general:

HYPERPRO can not be held responsible in any way for any form of physical, material, financial or other damage arising from use, assembly or overhaul of HYPERPRO products. HYPERPRO reserves the right to make changes without prior notice.

This product is ONLY TO BE INSTALLED BY A PROFESSIONAL MECHANIC.

This product is only to be used for the motorcycle brand, model and year stated specifically on top of the pages of this manual.

DO NOT attempt to install this product on motorcycles from any different brand, model and/or year than stated on the pages of this manual.

DO NOT use this kit for cars, boats, jet skis, snowmobiles, ATV's, aircraft, hovercrafts or any other vehicle and/or purpose.

HYPERPRO steering dampers are FOR RACE USE ONLY, NOT FOR HIGHWAY USE!

Before installation:

- Please read the entire manual carefully before starting the installation!
- Check if you have all the tools required. Good tools are a must.
- Protect your bike at the most important places in and around the work area (e.g. tank, fairing, frame, etc.), with a blanket, towel or similar.

During installation:

- Check all operations and parts carefully before, during and after performing each step.
- Clean all surfaces that are required for fitting parts together or for applying self adhesives or loctite, thoroughly with contactcleaner or another degreaser, unless otherwise stated.
- Be carefull not to damage or scratch any part of your bike.
- ALWAYS work relaxed and concentrated!! It is very easy to damage something or make a mistake.

After installation:

- Check and make sure that there is no contact between any part of the steering damper kit and any part of the motorcycle. The kit should not hit anything. Steering movement should not be limited by the steering damper. If the steering movement is limited, adjust the position of the tube in the clamp untill steering movment is normal again. Do not forget to tighten the clamp bolt again!
- ALWAYS check the steering movement and feeling before each ride !
- FIRST RIDES: Start with the damper turned fully open (turn adjuster knob fully counter clockwise). Start adjusting in between rides with steps of MAX. 2 CLICKS (0.25 TURN) EACH TIME, untill the damper is working satisfactory for your riding style.
- NEVER USE MAXIMUM SETTING, ALWAYS OPEN AT LEAST 2 CLICKS (0.25 TURN).
- WARNING ! DAMPER HAS AN ACTIVE / SPEEDSENSITIVE DAMPING SYSTEM;
 - Steering with NORMAL MOVEMENT should be FREE !!
 - Steering with FAST MOVEMENT should be CONTROLLED BY DAMPER !!
- HYPERPRO uses a special seal to reduce friction. The seal uses an oil film to work properly. It is normal that some oil can appear on the pistonrod.
- Damper works with oil: DAMPING CAN BE HARDER AT LOWER TEMPERATURES!

Step 1: assemble the steering damper

Assemble the damper using:

- Steering damper S120 (1)
- Fork bracket (2)
- Bolt M8x30 (3)
- Spacer D16 \varnothing 8 L4.5 (4)
- Lock nut M8 (5)
- Damper Clamp (6)

Use the bolt (3), spacer (4) and nut (5) to mount the fork bracket (2) to the steering damper (1). Tighten the nut to a torque of approx. 14-17Nm/124-150Lbs.In/10.3-12.5Lbs.Ft.

Shove the damper (1) through the damper clamp (6), untill the distance "X" of 100mm is reached. Make sure the clamp is positioned correctly and the adjustment knob is straight up, then tighten the M6 clamp bolt (6a) with a torque of approx. 6Nm/53Lbs.In/4.4Lbs.Ft.

Step 2: install the frame bracket

Install the frame bracket using:

- Frame bracket (7)
- 2x Spacer D17 \varnothing 10 L10.5 (8)
- 2x Bolt MF10x60 (9)

Remove the 2 frame cradle bolts from the right side of the frame. Place the spacers (8) in the holes and install the frame bracket (7) using the MF10x60 bolts (9). Tighten the bolts evenly to a torque of 22Nm/195Lbs.In/16Lbs.Ft.

Step 3: install the steering damper

Install the steering damper to the bike using:

- Steering damper assembly (Step 1)
- O-ring (10)
- Washer M8 \varnothing 16 (11)
- Bolt M8x25 button head (12)
- Spacer D17 \varnothing 10 L13 (13)
- Bolt MF10x40 (14)
- Spacer D16 \varnothing 6 L4 (15)
- 2x Bolt M6x30 (16)

Loosen the voltage regulator from the front of the lower yoke by removing the 2 bolts. Also remove the right fork leg clamp bolt from the lower yoke.

Mount the damper clamp (6) to the frame bracket (7) by using the O-ring (10) in between and the washer (11) and M8x25 bolt (12) on top. Tighten the bolt to a torque of approx. 14-17Nm/124-150Lbs.In/10.3-12.5Lbs.Ft.

Place spacer D17 \varnothing 10 L13 (13) in the right hand clamp bolt hole of the lower yoke and place the fork bracket (2) over it. Place the MF10x40 bolt (14) a few turns, but do not tighten yet. Use an M6x30 bolt (16) to mount the regulator and the fork bracket (2) to the front of the lower yoke, but do not fully tighten yet. Use spacer D16 \varnothing 6 L4(15) and an M6x30 bolt (16) to mount the other side of the regulator to the yoke. Tighten the MF10x40 bolt (14) to a torque of 27Nm/239Lbs.In/20Lbs.Ft. Tighten the M6 bolts (16) to a torque of approx. 5-9Nm/44-80Lbs.In/4.0-6.4Lbs.Ft.

Check if the damper is level horizontally and aligned to the bike. Check if the damper does not touch anything (e.g. tank) when steering from left to right. Check if the bike can make it's full steering angle.